

# FITTON INDUSTRIAL LIMITED

## BUILDING CONNECTIONS THAT LAST



### AN ISO CERTIFIED COMPANY

- ISO 45001:2018
- ISO 9001:2015
- ISO 14001:2015

**FORGED FITTINGS DIVISION**



# FITON Forge - The Company You Rely on For Forged Steel Fittings and Unions

FITON Industrial Limited, one name has been synonymous with premier Forged Steel Fittings and Unions – FITON Industrial Limited. Our continued investment in new technology helps maintain a constant level of superior quality in our products, which is unparalleled in the industry. Some of this new technology includes, state-of-the-art machining centers, which reduce product variability while increasing product serviceability and laser marking machines, which increases our capability to provide part information even on the smallest of components.

Backing by the most comprehensive product line in the industry and an extensive inventory that makes all our products readily available, Bonney Forge is the number one resource for the power, oil, chemical, marine, and construction industries through-out the world.

## Dependable, Durable, Uniform and Precise

Our unparalleled, integrated, state of the art manufacturing facility allows FITON Forge to develop products at the highest volume, all of which define the Bonney Forge mission – consistent unyielding quality. The tight control we maintain over our manufacturing process has earned Bonney Forge ISO-9001 recognition. Additionally, products are inspected to the strict requirements of ASME B16.11, MSS SP-79, and MSS SP-83.

## Superior Corrosion Resistance

All carbon and low alloy steel fittings are zinc-phosphate coated for superior corrosion resistance. Stainless steel fittings are electropolished to remove free iron and to provide a high-quality finish. All of this is done to ensure our products have the highest degree of corrosion resistance.

## All The Fittings You Need

Our fittings come in a variety of classes and material grades for any application. Socket Weld fittings are available in class 3000, 6000 and 9000. Threaded fittings are available in class 2000, 3000, and 6000.

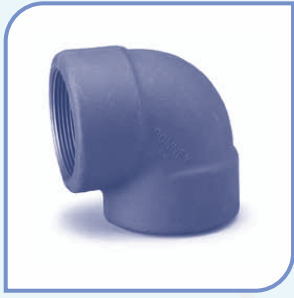
Threaded couplings, reducers, unions, half couplings and caps are available in class 3000 and 6000. Socket Weld couplings, reducers, half couplings and reducer inserts are available in class 3000, 6000 and 9000. Other specialty designed products are available upon request including the following:

- Reducing Tees
- Multiple end configurations
- Special length couplings
- We also consider customer specific drawings



## SOCKET WELD / THREADED FITTINGS

- Threaded - Available in Class 2000, 3000, & 6000
- Socket Weld - Available in Class 3000, 6000 & 9000



### 90° Elbow

Threaded / Plain

Class 2000 - 1/4" to 4"

Class 3000 - 1/8" to 4"

Class 6000 - 1/8" to 4"

Socket Weld

Class 3000 - 1/8" to 4"

Class 6000 - 1/8" to 4"

Class 9000 - 1/2" to 2"



### Tee

Threaded / Plain

Class 2000 - 1/4" to 4"

Class 3000 - 1/8" to 4"

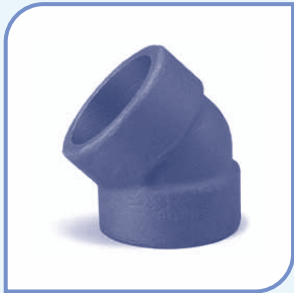
Class 6000 - 1/8" to 4"

Socket Weld

Class 3000 - 1/8" to 4"

Class 6000 - 1/8" to 4"

Class 9000 - 1/2" to 2"



### 45° Elbow

Threaded / Plain

Class 2000 - 1/4" to 4"

Class 3000 - 1/8" to 4"

Class 6000 - 1/8" to 4"

Socket Weld

Class 3000 - 1/8" to 4"

Class 6000 - 1/8" to 4"

Class 9000 - 1/2" to 2"



### Cross

Threaded / Plain

Class 2000 - 1/4" to 4"

Class 3000 - 1/8" to 4"

Class 6000 - 1/8" to 4"

Socket Weld

Class 3000 - 1/8" to 4"

Class 6000 - 1/2" to 3"

Class 9000 - 1/2" to 2"



### Lateral

Threaded / Plain

Class 3000 - 1/4" to 2"

Class 6000 - 1/2" to 1 1/2"

Socket Weld

Class 3000 - 3/8" to 2"

Class 6000 - 1/2" to 2"

Class 9000 - 1/2" to 1 1/2"



Swage Nipples -  
Eccentric / Concentric

Threaded / Plain

Class 3000 - 9000

Size 1/2" - 6"

Sch 10s - XXS

## PLUGS & BUSHINGS



**Round Plug**

1/8" to 4"



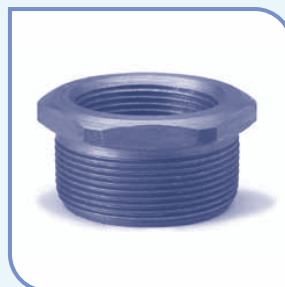
**Hexagon Plug**

1/8" to 4"



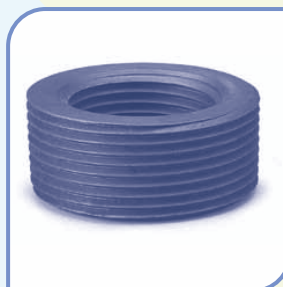
**Square Plug**

1/8" to 4"



**Hexagon Bushing**

1/4" to 4"



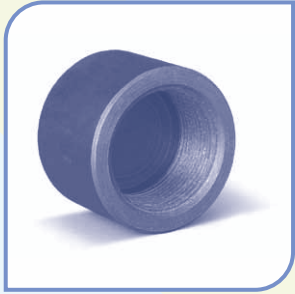
**Flush Bushing**

1/4" to 4"

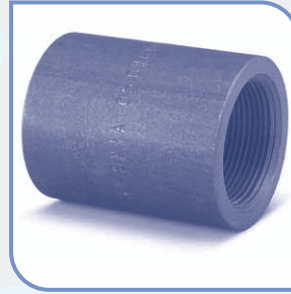
Additional sizes available on request

## COUPLINGS, REDUCERS & CAPS

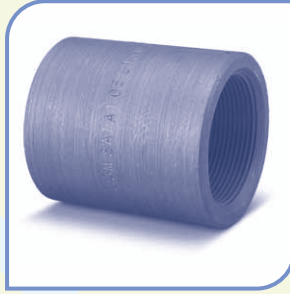
Available in class 3000 and 6000.



**Pipe Cap / Plug**  
Threaded / Plain  
Class 3000 - 1/8" to 4"  
Class 6000 - 1/8" to 4"  
Socket Weld  
Class 3000 - 1/8" to 4"  
Class 6000 - 1/8" to 4"



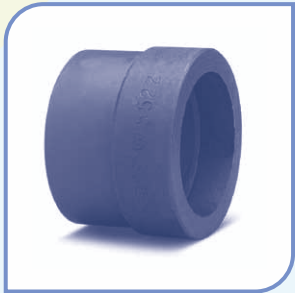
**Reducer**  
Threaded / Plain  
Class 3000 - 1/4" to 4"  
Class 6000 - 1/4" to 4"  
Socket Weld  
Class 3000 - 1/4" to 4"  
Class 6000 - 1/4" to 4"  
Class 9000 - 1/2" to 2"



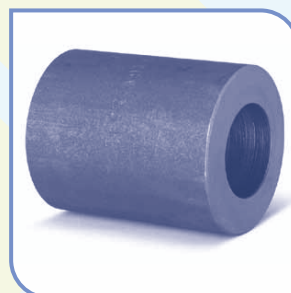
**Coupling (Half / Full)**  
Threaded / Plain  
Class 3000 - 1/8" to 4"  
Class 6000 - 1/8" to 4"  
Socket Weld  
Class 3000 - 1/8" to 4"  
Class 6000 - 1/8" to 4"  
Class 9000 - 1/2" to 2"

## REDUCER INSERT

Socket weld reducer inserts available in class 3000, 6000 and 9000. Inserts stocked in various materials. Consult factory for special applications.



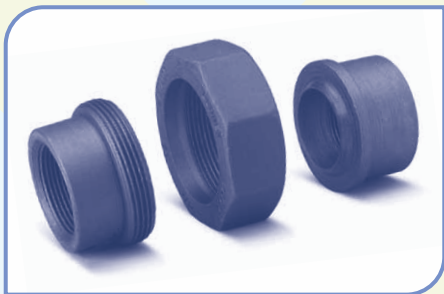
**Type 1**  
Nominal pipe sizes  
from 1/4" x 1/8"  
to 2" x 1 1/2"



**Type 2**  
Nominal pipe sizes  
from 1/2" x 1/4"  
to 2" x 1 1/4"

## UNIONS

FITTON Forge MSS-SP-83 threaded and socket weld unions in class 3000 and 6000. Use FITTON Forge Rockwood Unions for the ultimate in operation and durability.



**MSS-SP-83**  
Accommodates 1/8" to 3" pipe class 3000  
and 1/4" to 2" pipe class 6000.



**Rockwood**  
For use with 1/8" to 2" pipe. 1/8" to 2"  
threaded connection. 1/4" to 2" socket  
weld-stainless steel only.



**Lug Nut**  
3/8" to 4" class 3000 and 1/2" to 2"  
class 6000 threaded & socket weld.

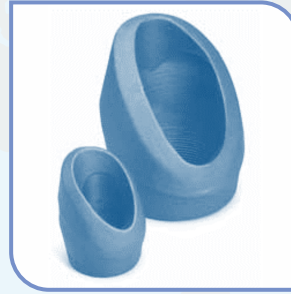
Additional sizes available on request

## O'LETS

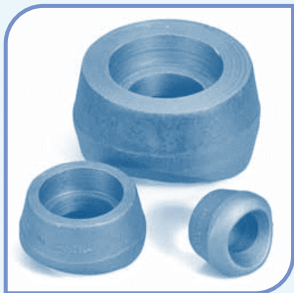
Available in class 3000 6000 and 9000.



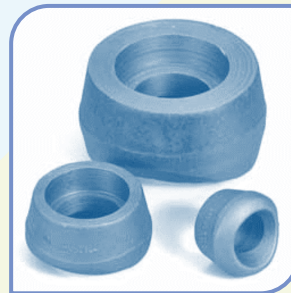
**Weldolet**  
Threaded / Plain  
Class 3000 – 9000  
Size ½" – 42"  
Sch 10 - XXS



**Latrolet**  
Threaded / Plain  
Class 3000 – 9000  
Size ½" – 8"  
Sch 10s - XXS



**Sockolet**  
Threaded / Plain  
Class 3000 – 9000  
Size ½" – 8"  
Sch 10 s- XXS



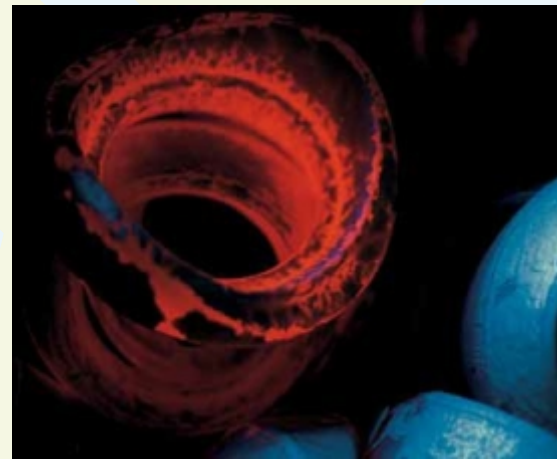
**Thredolet**  
Threaded / Plain  
Class 3000 – 9000  
Size ½" – 8"  
Sch 10 - XXS



**Nipolet**  
Threaded / Plain  
Class 3000 – 9000  
Size ½" – 8"  
Sch 10s - XXS

## MATERIAL SPECIFICATION

Carbon Steel	-	SA/A105, SA/A105N, SA/A350-LF2 Class ____, etc.
Stainless Steels	:	SA/A 182 F304L, F316L, F347, F321, F317/L, etc.
Alloy Steel	:	SA/A182 F11 Class ____, F22 Class ____, F5, F9, F91, etc.
Special Construction of Material	:	High Yield, Duplex, Super Duplex Stainless Steel



## QUALITY CONTROL

FITTON Industrial Limited craftsmanship is combined with rigid quality control systems to provide complete assurance of the highest manufacturing standards and compliance with applicable ASME and ASTM specifications. Every fitting manufactured is subjected to three separate quality control systems: one for material control, one for manufacturing control, and one for design control.

All forgings are inspected before being passed to the shipping room. Frequent analyses are made to check against mill documents. Accurate records are kept of every fitting, from initial forging bar through forging, heat treatment, machining, storage and shipment. Every single fitting is traceable to the exact material and process used in its manufacture.

In-house testing capabilities include:

Mechanical Testing: Tensile/Yield, Hardness and Charpy

Chemical Product Analysis

Positive Material Identification (PMI)

Ultrasonic Examination

Liquid Penetrant Examination

Magnetic Particle Examination

Corrosion Testing

Macrostructure Examination

Microstructure Examination

Ferrite Examination

## OUR MISSION

To be, today and in the future, the recognized leader in our industry, marketing and manufacturing forged fittings, branch connections and other related products to satisfy our customer's expectations.

---

*Values:*

*Cost, Quality, Quickly*

---







**INDIAN ASSOCIATE :**

**Rami infra associates**

77, manjusar GIDC, savli, Vadodara.

**Contact no.:** +91 97277 23300

---

**REGISTERED OFFICE :**

39 Roxborough Road  
Jain World Peace Centre  
HarrowHA1 1NS

**Email :** sales@fittonind.co.uk

**Website :** www.fittonind.co.uk

**Contact no.:** +44 203 983 6161

